



Race Instructions
Singlehand
GARMIN Round Denmark Race offshore
Start in Esbjerg

Dates

August 2nd – 13th 2023

Venue

The waters between Esbjerg and Aarhus

Organizers

Shorthand ECM, Sailing Aarhus
and Aarhus International Sailing Center in conjunction
with Esbjerg Søsport.

Any changes to these Race Instructions will be published on the Official Notice Board to be found on the event website – www.rounddenmarkrace.com

Version: July 6, 2023

1 Rules

- The race is governed by the rules stated in the Garmin Round Denmark Race (GRDR) Event Regulation.
- The special regulations for navigation in certain Danish, Swedish and German waters.
All traffic separations must be respected in accordance with COLREG rule 10. The competitors are required to pay attention to commercial traffic as well as to other competitors in the race.
- Navigation lights:
All participating boats must be equipped with fixed statutory navigation lights as described in COLREG rule 25(a) or 25(b). This also applies to boats under 7 meters of length.

2 Rest time Rule

Rest time begins when the boat is stopped with no movement over ground and ends when the boat is moving again. The stop may be by anchor, buoy or moored in a harbor.

If a participant does not comply with the rest time rules, he or she must immediately retire from the race.

2.1 Mandatory rest time in Skagen:

A mandatory rest after the start in Esbjerg is Skagen, where a stopover of a minimum of 16 hrs. must be made. The time of the stopover begins when the boat is moored in Skagen Harbor. Water and sanitary facilities are available.

The harbor fee for this stop is free of charge for all competing single hand boats. For identification, boats must display the GRDR flag in the rear stay.

GRDR competitors must be moored in bassin 2 (red circle)



Boats may be required to be moored long side and side-by-side.

2.2 Rest Time Rule 44/8:

2.2.1 After the mandatory rest in Skagen the race is divided into periods of 44 hours.

Within these 44 hours, a minimum of 8 consecutive rest time hours *must* be taken. Thus, a maximum of 36 consecutive hours of sailing is allowed ($44 - 8 = 36$). It's allowed to apply the use of engine to get to the selected position for the stop when a participant is 0.5 Nautical Miles from the position. After the stop, the boat must return to the same position where the engine was applied before resuming racing. The 8 hours rest time of each period will be subtracted from the final elapsed sail time. Rest time above 8 hours for each 44 hours period will not be subtracted.

2.2.2 If a participant exceeds 36 hours of non-stop sailing or rests less than 8 hours, the following applies:

A boat may sail up to 60 minutes over the 36 hours' time limit or the rest period is less than 8 hours but more than 7 hours, the next rest period must be of at least 10 hours.

This option may only be used once and only once during the entire race.

2.2.3 If a boat does not fulfill the requirements of rule 2.2.2 at the last stop before finishing, 2 hours will be added to the finishing time.



2.2.4 Exception:
If a boat is within 15 nm from the finishing line, the Rest Time Rule 44/8 does not apply any longer and the boat may continue to sail to finish the race.

3 Designated person ashore (shore crew)

It is mandatory for every single hand participant to have a Designated Person Ashore (DPA). The race management must be able to reach the DPA at any time (24/7) during the race. The DPA is not required to attend the Skippers meeting prior to the start or be present in Denmark during the race.

See further in the GRDR Event Regulations:

"ADDITIONAL REQUIREMENTS IN SINGLEHANDED CATEGORY"

4 Schedule

Wednesday	August 2 nd	14:00 – 17:00	Registration at Esbjerg Maritimt Center - Esbjerg Brygge 10, 6700 Esbjerg
		18:00 – 22:00	Sail away dinner/party at Registration at Esbjerg Maritimt Center
Thursday	August 3 rd	09:00 – 11:00	Registration at Esbjerg Maritimt Center
		12:00	Mandatory "Skipper's meeting" all classes at Esbjerg Maritimt Center.
		16:00	Starting signal – all classes

5 Registration and documents

All competitors must register at the Race Office, located at Esbjerg Maritimt Center - Esbjerg Brygge 10, 6700 Esbjerg not later than 11 hrs on Thursday June 3rd 2023.

At registration, the following document must be presented (to be found on the Official Notice Board on the event web and to be prepared in advance):

Crew list incl. shore crew (designated person ashore - DPA) and incl. safety declaration.

6 Mandatory Skipper's meeting

The skipper's meeting will take place at Esbjerg Maritimt Center - Esbjerg Brygge 10, 6700 Esbjerg

7 Messages to competitors

7.1 Messages for the participants concerning relevant changes, corrections and warnings are continuously displayed on the Official Notice Board. Important messages in connection with the start will be announced via VHF channel 72.

7.2 During the starting sequence, the race management will, if possible, communicate on VHF channel 72.

8 The course

- Start in Esbjerg (see Race Instruction 10)
- Grådyb
- Red lateral buoy (55°25'37.1"N 8°13'44.2"E) must be left to starboard
- Green lateral buoy (55°30'31.7"N 7°59'10.9"E) must be left to starboard
- Green lateral buoy (55°32'16.6"N 7°53'43.4"E) must be left to starboard
- Green lateral buoy (55°34'0.1"N 7°49'30.0"E) must be left to starboard
- Cardinal bouy BY (57°45'58.6"N 10°43'44.4"E) must be left to starboard
- Cardinal buoy BYB (57°43'51.0"N 10°42'19.1"E) must be left to

starboard

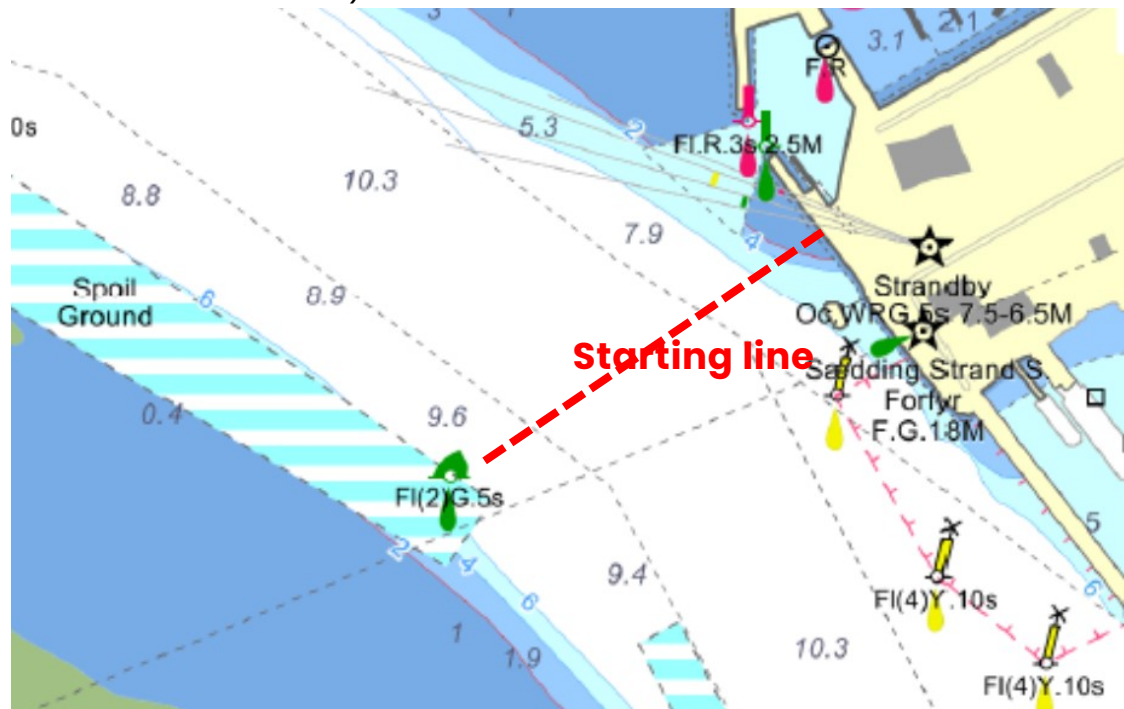
- Skagen Harbor (mandatory 16 hours stopover)
- Sjælland must be left to starboard
- Christiansø and Bornholm must be left to starboard
- Falster (Gedser) and Lolland must be left to starboard
- Funen must be left to port
- Finish in Aarhus (see Race Instruction 16)

9 Time limit

The time limit for a boat to finish the RDR is Sunday, the 13th of August at 17.00 hrs (CET)

10 The starting line

The starting line will be between an orange flag ashore (approx. pos: 55°28'46.9"N 8°24'30.4"E) and green lateral buoy (Fl(2)G.5s) (approx.pos: 55°28'37.6"N 8°24'8.8"E)



The starting line to be passed from southeast to northwest.

11 Starting signals displayed ashore

Time	Visual signal displayed ↑	Visual signal lowered ↓	Sound signal	Meaning
T-5	5 ↑		●	5 minutes to start
T-4	4 ↑	5 ↓	●	4 minutes to start
T-3	3 ↑	4 ↓	●	3 minutes to start
T-2	2 ↑	3 ↓	●	2 minutes to start
T-1	1 ↑	2 ↓	—	1 minut to start
0	↑	1 ↓	●	Starting signal

12 Individual Recall (Jumping the gun)

There will be NO recalls. If any part of the hull, of a boat is on the course side of the starting line the boat will be penalized by 30 minutes in its finishing time.

No boats are allowed to return to restart.

13 Postponement

If a start is postponed, information will be given by the race management on VHF channel 72 and by displaying flag AP.

If signal AP is displayed ashore with 2 sound signals it means:

The start has been postponed; first warning signal will be given not earlier than 60 minutes after AP is lowered with one sound signal.

If signal AP is displayed from the race management vessel with 2 sound signals it means: The start has been postponed; first warning signal will be given 1 minute after AP is lowered with one sound signal.

14 Late starters

Boats starting more than 60 minutes after the starting signal will be noted: Did Not Start.

Anyhow, if there is a good reason for the late start this must be communicated to the race management via VHF channel 72 or by phone to +45 53 83 78 27

15 Finishing

At least 30 minutes before the expected finishing time in Aarhus, participants **must** report an ETA to the race management. This may be done by VHF channel 72 or text message (SMS) to 45 53 83 78 27

16 The finishing line

Between an orange flag on the balcony of Aarhus International Sailing Center and a conical mark with GARMIN advertising.

When finishing the line must be crossed from east towards west.

Be aware of the limitations at the breakwaters.



17 **Withdrawal from the race**

A skipper/boat that withdraws from the race or in any other way suspends the race is obliged to state this to the race management on phone number:

+45 53 83 78 27 or text message (SMS) as soon as possible. When staying more than 24 hours in a harbor a boat will be considered to have withdrawn from the race.

18 **Compensation for assistance to at boat in need**

All participants in RDR are obliged to give all possible assistance they can for any person or vessel in danger. If such assistance is given during the race, a time compensation can be requested. The request must be based on a statement clarifying that your final ranking in GRDR has been considerably affected because of the provided assistance. The request must be noted in the logbook with description of the incident.



19 Observing and reporting breaches of rules

- 19.1 A boat observing a breach of a rule related to the Garmin Round Denmark Race may report this observation to the race management by text message (SMS) to +45 53 83 78 27
- 19.2 Further action, if any, will then be taken by the event management.
- 19.3 Penalties for breaches reported by a competitor or observed by the event management is at the discretion of the event management and may be anything from a warning, a time penalty, or a disqualification.

20 Media rights

By participating in the GRDR race competitors automatically grant to the event management and its sponsors the right in perpetuity to make, use and show, from time to time at their discretion, any pictures, SoMe content, motion pictures and live, taped or filmed television and other reproductions made by the competitors during the period of the competition without any compensation.

Useful contacts:

Race management (Bridge) phone or sms: +45 53 83 78 27
Can be reached 24/7 during the entire race.

Race management (Bridge) e-mail: raceoffice@sailing-aarhus.dk
Can be reached 24/7 during the entire race.