

Change of Race Instructions no 4. Inshore (start in Aarhus)

These changes only apply to competitors in the Garmin Round Denmark inshore fleet.

New shortened course:

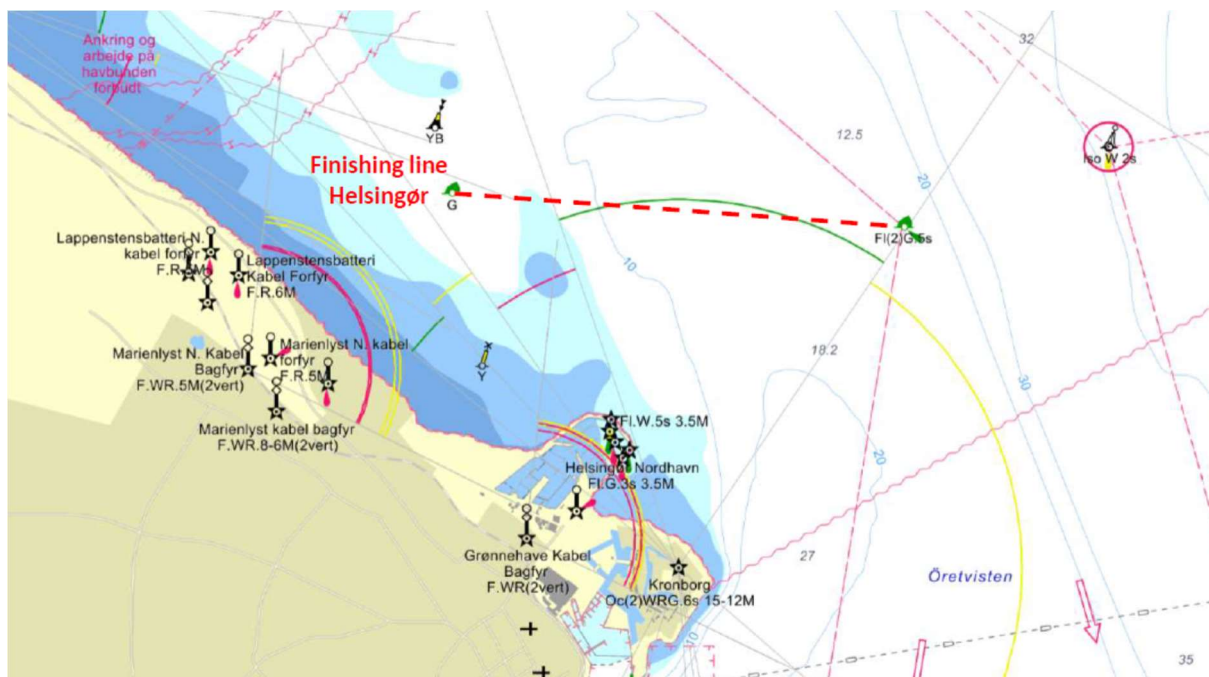
- Start
- GARMIN Fly By mark (to be left to port)
- Anholt (to be left on starboard)
- Helsingør (mandatory pit stop)
- Falster and Lolland (Gedser) (to be left on starboard)
- Funen (to be left on starboard)
- Finish in Aarhus



The finishing line of leg number one (Aarhus – Helsingør)

The finishing line is just north of Helsingør between two green lateral buoys:

- 56° 3.194' N 12° 36.467' E
- 56° 3.116' N 12° 38.215' E

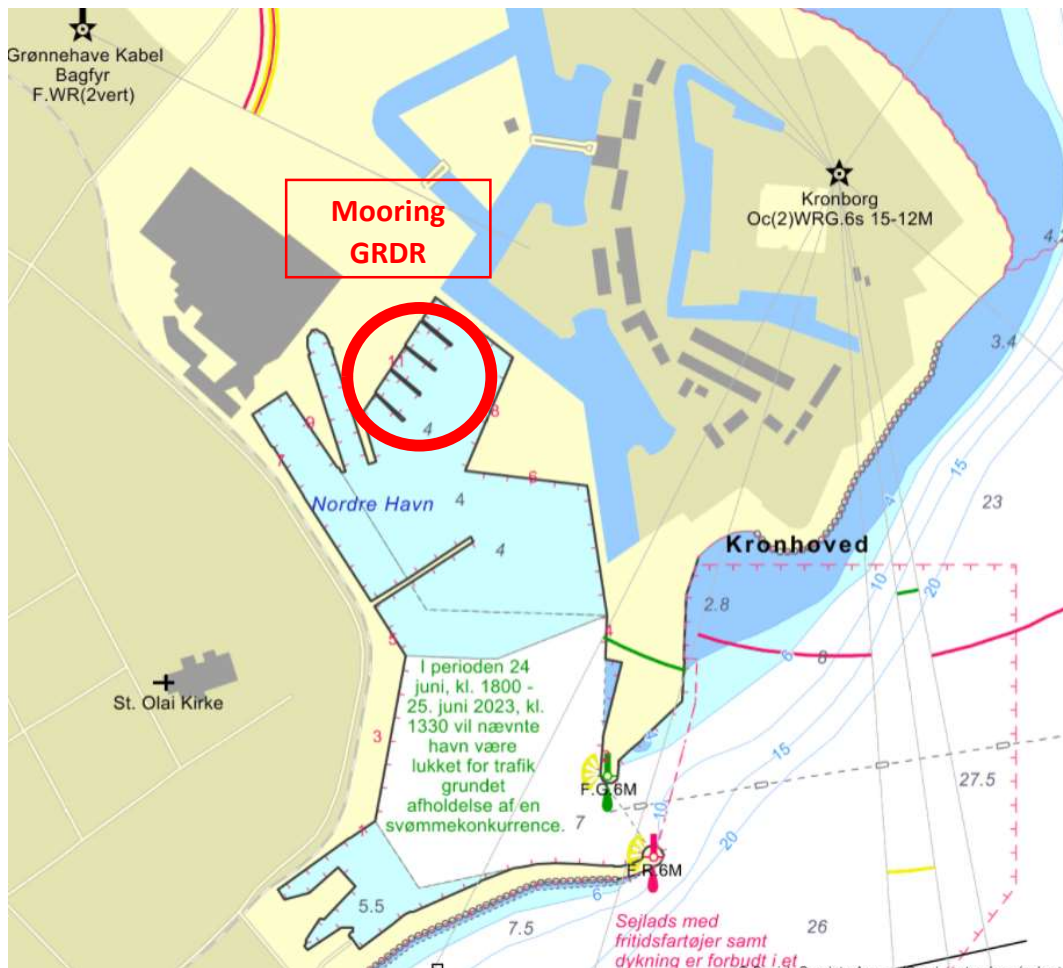


Finishing times will be recorded via TracTrac, but as “the eye in the sky” sometimes may have drop outs, competitors are requested to register their own finishing time and send it via SMS to the Race Management **+45 53 83 78 27** with boat name and observed finishing time (example: Emma = 14:16:22)

Mandatory stopover in Helsingør:

All competitors must make a stopover in the Culture Harbor of Helsingør and remain there until further notice is given by the Race Management.
 The stopover is free of harbor charge and includes free access to electricity.
 See drawings below.

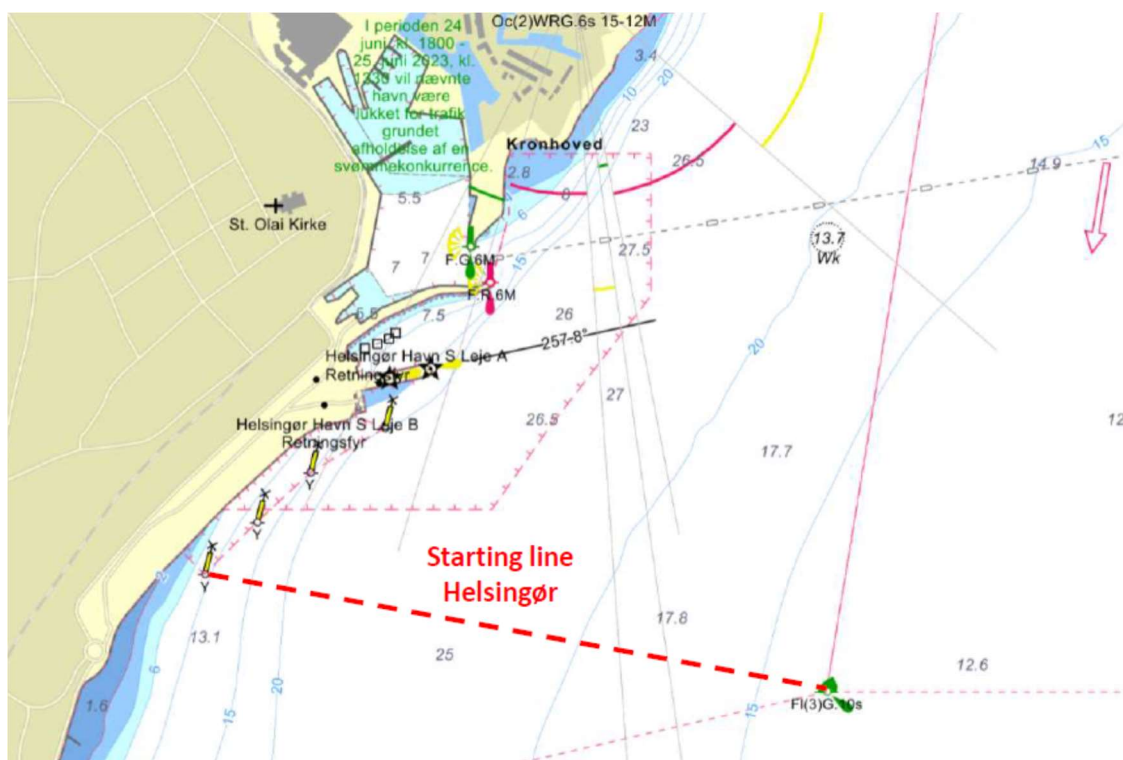




Starting line after the stopover in Helsingør

After the stop over in Helsingør the starting line will be south of Helsingør Harbor between green lateral buoy and yellow special mark:

- 56° 1.680' N 12° 37.795' E
- 56° 1.784' N 12° 36.692' E



Singlehand competitors

The 44/8 Rest Time Rule, as described in Race Instructions Singlehand, does not apply on racing leg no 1 (Aarhus – Helsingør).

Further information will be given as soon as possible and pending on the weather situation

This change applies from August 5th 2023.

Race Management

Jens Villumsen