

Race Instructions
Singlehand
GARMIN Round Denmark Race offshore
Start in Esbjerg

Dates

June 15th – 25th 2022

Venue

The waters between Esbjerg and Aarhus

Organizers

Shorthand Events, Sailing Aarhus
and Aarhus International Sailing Center in conjunction with
Esbjerg Søsport.

Any changes to these Race Instructions will be published on the Official Notice Board to be found on the event website – www.rounddenmarkrace.com

Version: May 11, 2022

1 Rules

- The race is governed by the rules stated in the Garmin Round Denmark Race (GRDR) Event Regulation.
- The special regulations for navigation in certain Danish, Swedish and German waters.
 All traffic separations must be respected in accordance with COLREG rule 10. The competitors are required to pay attention to commercial traffic as well as to other competitors in the race.
- Navigation lights:
 All participating boats must be equipped with fixed statutory navigation lights as described in COLREG rule 25(a) or 25(b). This also applies to boats under 7 meters of length.

2 Rest time Rule

Rest time begins when the boat is stopped with no movement over ground and ends when the boat is moving again. The stop may be by anchor, buoy or moored in a harbor.

If a participant does not comply with the rest time rules, he or she must immediately retire from the race.

2.1 Mandatory rest time in Skagen:

A mandatory rest after the start in Esbjerg is Skagen, where a stopover of a minimum of 16 hrs. must be made. The time of the stopover begins when the boat is moored in Skagen Harbor. Water and sanitary facilities are available.

The harbor fee for this stop is free of charge for all competing single hand boats. For identification, boats must display the GRDR flag in the rear stay. GRDR competitors must be moored in bassin 2 (red circle)



Boats may be required to be moored long side and side-by-side.

2.2 **Rest Time Rule 44/8:**

2.2.1 After the mandatory rest in Skagen the race is divided into periods of 44 hours.

Within these 44 hours, a minimum of 8 consecutive rest time hours *must* be taken. Thus, a maximum of 36 consecutive hours of sailing is allowed ($44-8 = 36$). It's allowed to apply the use of engine to get to the selected position for the stop when a participant is 0.5 Nautical Miles from the position. After the stop, the boat must return to the same position where the engine was applied before resuming racing. The 8 hours rest time of each period will be subtracted from the final elapsed sail time. Rest time above 8 hours for each 44 hours period will not be subtracted.

2.2.2 If a participant exceeds 36 hours of non-stop sailing or rests less than 8 hours, the following applies:

A boat may sail up to 60 minutes over the 36 hours' time limit or the rest period is less than 8 hours but more than 7 hours, the next rest period must be of at least 10 hours.

This option may only be used once and only once during the entire race.

2.2.3 If a boat does not fulfill the requirements of rule 2.2.2 at the last stop before finishing, 2 hours will be added to the finishing time.

2.2.4 Exception:

If a boat is within 15 nm from the finishing line, the Rest Time Rule 44/8 does not apply any longer and the boat may continue to sail to finish the race.

3 **Designated person ashore (shore crew)**

It is mandatory for every single hand participant to have a Designated Person Ashore (DPA). The event management must be able to reach the DPA at any time (24/7) during the race. The DPA is not required to attend the Skippers meeting prior to the start or be present in Denmark during the race.

See further in the GRDR Event Regulations:

"ADDITIONAL REQUIREMENTS IN SINGLEHANDED CATEGORY"

4 Schedule

Wednesday	June 15 th	08:00 – 12:00	Registration at Esbjerg Yacht Harbor (Esbjerg Strand, 6700 Esbjerg)
		10:00 – 12:30	Random safety check
		12:30	Mandatory “Skipper’s meeting”
		15:00	Starting signal – Single hand fleet.
Saturday	June 25 th	18:00	Award ceremony and regatta diner at Aarhus International Sailing Center

5 Registration and documents

All competitors must register at the Race Office, located in Esbjerg Yacht Harbor, Esbjerg Strand, 6700 Esbjerg not later than 12 hrs on Wednesday June 15th 2022.

At registration, the following document must be presented (to be found on the Official Notice Board on the event web and to be prepared in advance):

Crew list incl. shore crew (designated person ashore - DPA) and incl. safety declaration.

6 Mandatory Skipper’s meeting

The skipper’s meeting will take place outside the Race Office at Esbjerg Yacht Harbor (Esbjerg Havneø). See schedule.

7 Messages to competitors

- 7.1 Messages for the participants concerning relevant changes, corrections and warnings are continuously displayed on the Official Notice Board. Important messages in connection with the start will be announced via VHF channel 72.
- 7.2 During the starting sequence, the event management will, if possible, communicate on VHF channel 72.

8 The course

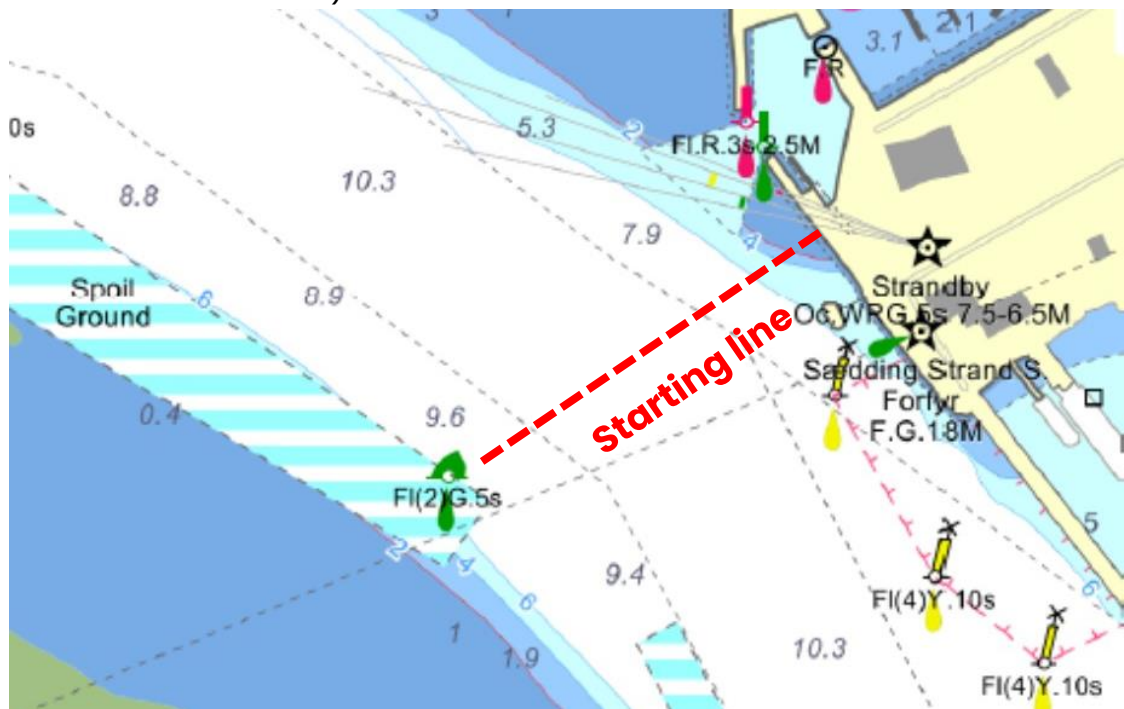
- Start in Esbjerg (see Race Instruction 10)
- Grådyb
- Red lateral buoy (55°25'37.1"N 8°13'44.2"E) must be left to starboard
- Green lateral buoy (55°30'31.7"N 7°59'10.9"E) must be left to starboard
- Green lateral buoy (55°32'16.6"N 7°53'43.4"E) must be left to starboard
- Green lateral buoy (55°34'0.1"N 7°49'30.0"E) must be left to starboard
- Cardinal bouy BY (57°45'58.6"N 10°43'44.4"E) must be left to starboard
- Cardinal buoy BYB (57°43'51.0"N 10°42'19.1"E) must be left to starboard
- Skagen Harbor (mandatory 16 hours stopover)
- Sjælland must be left to starboard
- Christiansø and Bornholm must be left to starboard
- Falster (Gedser) and Lolland must be left to starboard
- Funen must be left to port
- Finish in Aarhus (see Race Instruction 16)

9 Time limit

The time limit for completion of the race is Saturday June 25th at 18:00

10 The startline

The starting line will be between an orange flag ashore (approx. pos: 55°28'46.9"N 8°24'30.4"E) and green lateral buoy (FI(2)G.5s) (approx.pos: 55°28'37.6"N 8°24'8.8"E)



The starting line to be passed from southeast to northwest.

11 Starting signals displayed ashore

Time	Visual signal displayed ↑		Visual signal lowered ↓		Sound signal	Meaning
T - 5	5	↑			●	5 minutes to start
T - 4	4	↑	5	↓	●	4 minutes to start
T - 3	3	↑	4	↓	●	3 minutes to start
T - 2	2	↑	3	↓	●	2 minutes to start
T - 1	1	↑	2	↓	—	1 minut to start
0		↑	1	↓	●	Starting signal

12 Individual Recall (Jumping the gun)

There will be NO recalls. If any part of the hull, of the boats is at the other side of the starting line the boat will be penalized by 30 minutes in its finishing time.

No boats are allowed to return to a restart.

13 Postponement

If a start is postponed, information will be given by the event management on VHF channel 72 and by displaying flag AP.

If signal AP is displayed ashore with 2 sound signals it means:

The start has been postponed; first warning signal will be given not earlier than 60 minutes after AP is lowered with one sound signal.

If signal AP is displayed from the event management vessel with 2 sound signals it means: The start has been postponed; first warning signal will be given 1 minute after AP is lowered with one sound signal.

14 Late starters

Boats starting more than 60 minutes after the starting signal will be noted: Did Not Start.

Anyhow, if there is a good reason for the late start this must be communicated to the event management via VHF channel 72 or by phone to +45 53 83 78 27

15 Finishing

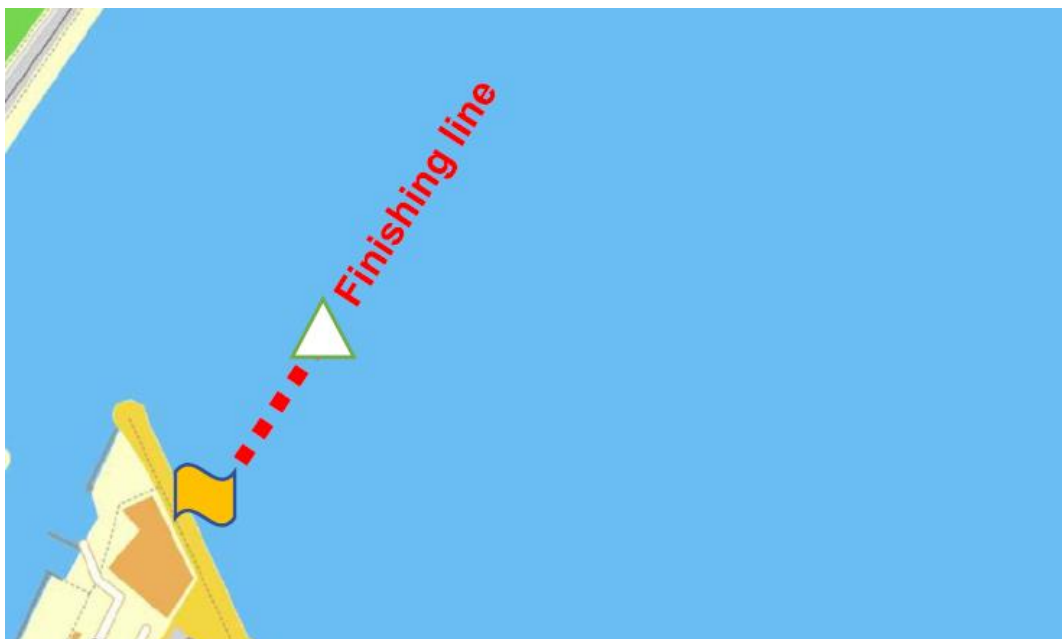
At least 30 minutes before the expected finishing time in Aarhus, participants **must** report an ETA to the event management. This may be done by Garmin Inreach, VHF channel 72 or sms to 45 53 83 78 27

16 The finishing line

Between an orange flag on the balcony of Aarhus International Sailing Center and a conical mark with GARMIN advertising.

When finishing the line must be crossed from east towards west.

Be aware of the limitations at the breakwaters.



17 Withdrawal from the race

A skipper/boat that withdraws from the race or in any other way suspends the race is obliged to state this to the event management on phone number:

+45 53 83 78 27 or text message (SMS) as soon as possible. When staying more than 24 hours in a harbor a boat will be considered to have withdrawn from the race.

18 Compensation for assistance to at boat in need

All participants in RDR are obliged to give all possible assistance they can for any person or vessel in danger. If such assistance is given during the race, a time compensation can be requested. The request must be based on a statement clarifying that your final ranking in RDR has been considerably affected because of the provided assistance. The request must be noted in the logbook with description of the incident.

19 Observing and reporting breaches of rules

- 19.1 A boat observing a breach of a rule related to the Round Denmark Race may report this observation to the Race Control via Garmin InReach mail or sms text message to +45 53 83 78 27
- 19.2 Further action, if any, will then be taken by the event management.
- 19.3 Penalties for breaches reported by a competitor or observed by the event management is at the discretion of the event management and may be anything from a warning, a time penalty, or a disqualification.

20 Media rights

By participating in the GRDR race competitors automatically grant to the event management and their sponsors the right in perpetuity to make, use and show, from time to time at their discretion, any pictures, motion pictures and live, taped or filmed television and other reproductions of the competitors during the period of the competition without compensation.



Useful contacts:

Event management (Bridge) phone or sms: +45 53 83 78 27
Can be reached 24/7 during the entire race.

Event management (Bridge) e-mail: raceoffice@sailing-aarhus.dk
Can be reached 24/7 during the entire race.